



Flat 3

Hawthorne Road | Walthamstow | London | E17 4QB

£1,575 PCM



STRETTONS

Key features

- One Double Bedroom
- Top Floor Apartment
- Recently Refurbished to a Very High Standard Throughout
- Unfurnished with Kitchen Appliances
- Open Lounge / Kitchen
- Fully Double Glazed Windows & Gas Central Heating
- Available from 29th April 2025
- Within 0.6 Mile to Both Walthamstow Central Underground Station (Victoria Line) & Queens Road Overground Station
- EPC Rating: B (83)
- Council Tax Band B

Description

Nestled in the desirable Lloyds Park area of Walthamstow, this stunning top floor flat on Hawthorne Road offers a perfect blend of modern living and convenience. Recently refurbished to an exceptional standard, this one-bedroom apartment is ideal for those seeking a stylish and comfortable home.

Upon entering, you are greeted by a bright and airy open plan kitchen and spacious lounge, creating an inviting atmosphere for both relaxation and entertaining. The contemporary design is complemented by high-quality finishes, ensuring a chic and sophisticated living space. The modern three-piece bathroom suite adds to the appeal, providing a tranquil retreat for your daily routines.

The location is particularly advantageous, with Walthamstow Central Station just a short distance away, offering excellent transport links to the heart of London. This makes it an ideal choice for commuters or anyone wishing to enjoy the vibrant city life while residing in a more serene neighbourhood.

Tenancies Signed on or after 1st June 2019

Holding deposit - 1 week's rent

Security deposit - 5 week's rent (rent of £50,000 or over per annum - 6 week's rent)

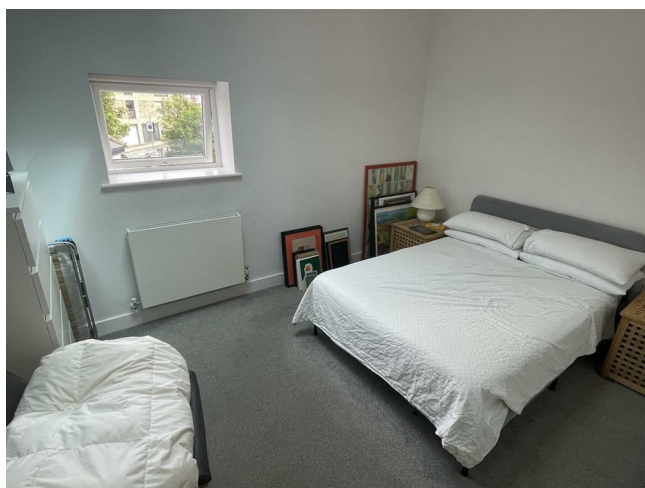
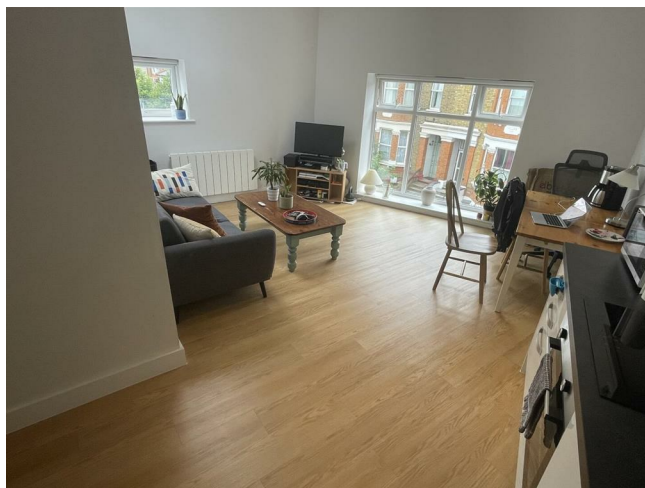
Unpaid rent - 3% above Bank of England base rate from Rent Due Date after 14 days in arrears.

Lost keys - Cost of replacement key or other security device/lock replacement/locksmith.

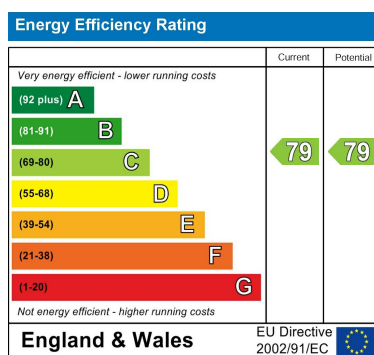
£15/hour (inc. VAT) for extra costs incurred in time taken to replace keys.

Variation of contract - £50 (inc. VAT) per variation

Directions







Council Tax Band **B** EPC Rating **C**



69 Paul Street
London
London
EC2A 4NG
02085 094406

michael.mercer@strettons.co.uk